



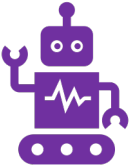
What's driving developments?

<u>Technology</u>	<u>Socio-economic</u>
Availability of data	Talent
Computational power	Investment
AI methods	Customer wants & needs

What's limiting developments?



<u>Technology</u>	<u>Socio-economic</u>
Data availability & quality	Trust
Computational models	Org. capabilities & culture
	Effectiveness



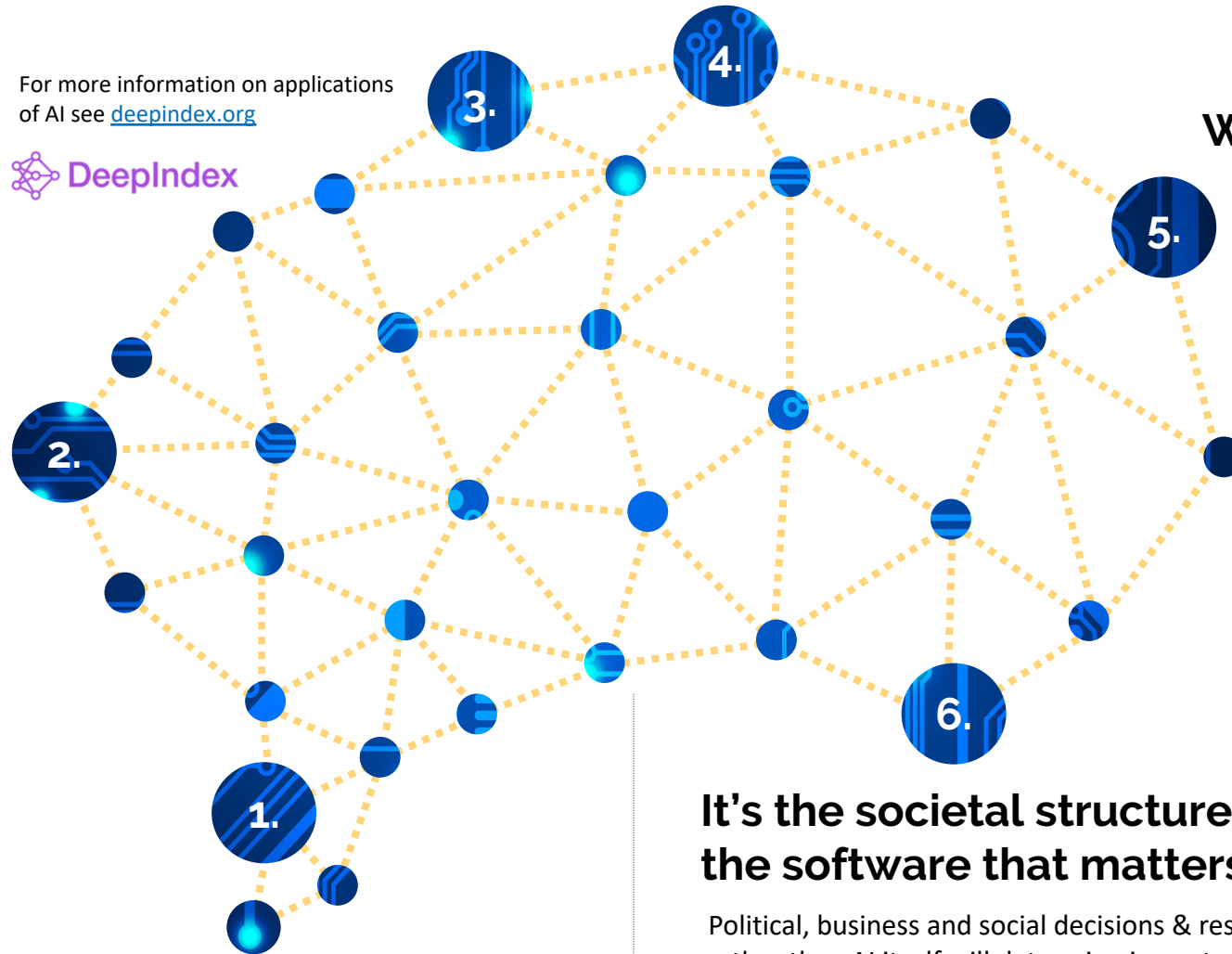
What can AI do?

e.g. Control robot	Physical task
Drive vehicle	
Disease outbreak	Predict
Staff resignations	
Diagnose disease	Decision support
Detect fraud	
Approve payment	Process automation
Factory energy management	
Personal learning paths	Recommend
Books or movies	
Facial recognition	Match
Potential applicants	
Review scientific results	Knowledge generation
Develop risk profiles	

For more information on applications of AI see deepindex.org



DeepIndex



Will machines take "our jobs"?

Increasingly likely that many tasks in jobs could become automated. There is uncertainty over extent (& timing) to which this will:

- **Displace** human workers
- **Create** new jobs
- **Augment** peoples' work
- **Devalue** human jobs

"Over the next decade, AI won't replace managers, but managers who use AI will replace those who don't."

Erik Brynjolfsson and Andrew McAfee

It's the societal structures not the software that matters

Political, business and social decisions & responses rather than AI itself will determine impacts on work and other aspects of life.

How can AI be developed & used to create better lives for all, rather than reinforce existing iniquitous systems and structures?

AI & You



What skills do you need to keep, improve, & **develop** to avoid "learned helplessness" in a more automated world?

How should you **balance** cognitively demanding tasks with more routine ones to reduce cognitive overload and stress?



How do you make sure that AI creates a more **fulfilling** life, rather than a busier one?

What is AI?

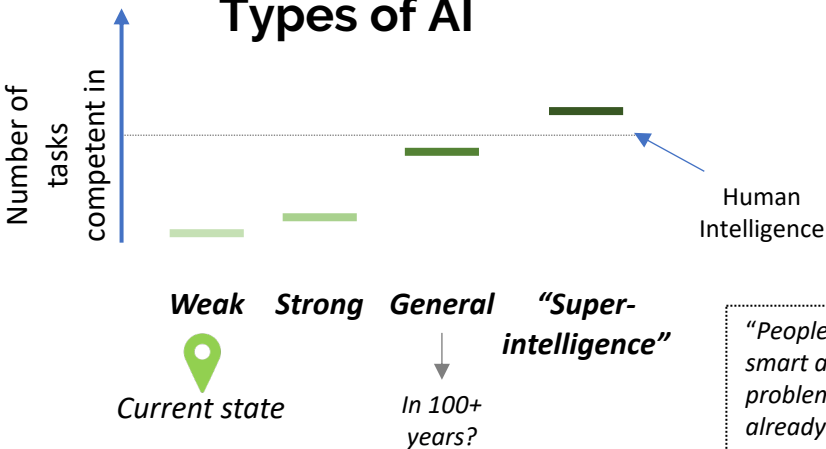
Software able to mimic human cognitive functions, such as learning and problem solving

Human Intelligence

"People worry that computers will get too smart and take over the world, but the real problem is that they're too stupid and they've already taken over the world."

Pedro Domingos

Types of AI



Weak **Strong** **General** **"Super-intelligence"**

Current state

In 100+ years?